

THE LITTLE SHIP GAME FISH CLUB GARMIN™

CELEBRATING
50
YEARS



TOURNAMENT DATES
21, 22 & 23RD
FEBRUARY 2025



GAME FISH CLASSIC
2025

THE LITTLE SHIP GAME FISH CLUB

GARMIN™

GAME FISH CLASSIC

General Information & Rules

GENERAL INFORMATION

DATES: February 21, 22 & 23rd 2025.

ITINERARY: Friday 21st: Start Fishing 0700 cease 1500.
 Saturday 22nd: Start Fishing 0700 cease 1500.
 Dinner at the One Mile from 1800.
 Sunday 23rd: Breakfast from 07:30am. Presentation from approximately 08:15am.

Please Note: First 35 vessels entering the tournament will be guaranteed access to the pontoon for the famous raft up. Later entries MAY have to anchor out. Courtesy pick-up can be arranged

ENTRY FEES:

- Anglers: \$200.00 per team member, which includes competition entry, functions, happy hours, shirt and tournament pack.
- Juniors: \$85.00. All above inclusions, but eligible for junior angler awards only.
- Skipper & Crew: \$150.00. (Max 2 crew) Includes all functions, happy hours, shirt and tournament pack.
- Guest: \$85.00. Admits to all functions and happy hours.

WEATHER AND SAFETY:

The Tournament Committee reserves the right to postpone or cancel any day or days of the Tournament due either to actual or forecast weather conditions. The issuing of a Strong Wind Warning will automatically lead to cancellation of fishing in the region covered by the warning for the period that it remains in force. Skippers are at all times responsible for the safety of their vessels and all persons aboard.

POSTPONEMENT:

In the event of postponement, the Committee will endeavour to contact the captain of all registered teams to advise of the decision. Confirmation may also be obtained by phoning the Club on 07 3409 9022 or the Tournament Committee on 0428 458039.

TOURNAMENT RULES

The Little Ship Club Garmin Game Fish Classic

GFAA Rules will apply for the duration of the Tournament, with the following additions and notes.

1. Qualifications: All Anglers, Skippers and Crew entered to compete must be current financial fishing members of a QGFA member club, or current financial fishing members of a club affiliated with GFAA.

2. Teams - Interclub Shield: Open to teams representing Clubs from QGFA Zones 3 & 4. Teams to consist of no less than two and no more than five anglers. Shield is awarded to the Club fielding the highest point scoring team. Each team member to receive equal fishing time.

3. Fishing Times: Friday 0700 to 1500hrs. Saturday 0700 to 1500hrs.

4. Line Classes: 8kg & 15kg only under 100 metres depth of water. 24kg, 37kg & 60kg only in water deeper than 100 metres. Skippers must advise GFB when changing line class depths.

5. Live Baiting: Live Baiting is permitted using non-offset circle hooks only. No live bait to be on board prior to start fishing Friday.

6. Area to be fished: Any waters from Noosa to Tweed Heads, including Moreton Bay. Vessels may depart home ports on both days, but must be present at the One Mile for dinner Saturday night and presentation Sunday.

7. Late Hook-ups: May be played out each day, providing GFB has been notified and has acknowledged prior to cease fishing. Radio contact to be maintained and GFB advised as soon as the fish is tagged, boated, or lost.

8. Communications & Radio Scheds: All vessels must carry a VHF(ch21) radio. If alternate frequencies are required, these will be advised by GFB. All vessels to log on prior to start fishing & log off on return to port. GFB will advise start & cease fishing and will maintain a watch from one hour prior to start fishing until 1900hrs daily. VHF 82 will be secondary sched channel for southern vessels unable to receive ch21. Radio silence to be observed from fifteen minutes prior to cease fishing allow for late hook-ups.

Sched Times: Friday: 0903, 1103, 1303 & 1433
 Saturday: 0903, 1103, 1303 & 1433

9. Eligible Species & Point Scoring:

a) Tag & Release: Only Billfish species, Yellowfin Tuna & Longtail Tuna are eligible for tag points. Billfish must be tagged only with "Billfish Only" tags. All other Gamefish species to be tagged only with NSW fisheries approved nylon tags.

Points Table	8KG	15KG	24KG	37KG	60KG
Black, Blue, Striped Marlin	2500	1500	2500	2000	1500
Sailfish & Spearfish	2500	1500	750	500	250
Yellowfin Tuna	400	300	200	150	75
Other Game Fish Species: Longtail, Mahi Mahi, Wahoo, Cobia, Amberjack & SamsonFish	350	250	150	75	20

** A Maximum of 3 fish of any one species per day for other game fish **

** Tag Points accrued once the tag is attached to the fish **



b) Weighed Fish: All recognised game fish species are eligible for weighing. A 10% allowance will be made for dressed fish. It should be noted that any potential record claim should be submitted entire. All captures must weigh in excess of line class.

Points Table	8KG	24KG	37KG	60KG
Weight X Factor	12.5	4.2	2.7	1.6

** Maximum 3 fish of any one species per angle per day can be weighed *
Anglers must take possession of all fish after weighing or demerit points may apply*

c) Champion Angler Tuna: Will be awarded to the angler with the highest total score, which may include a combination of tag & release points for eligible species & points for any tuna species weighed. As in Rule 9b above, all weighed fish must exceed line class.

10) Capture Sheets: Tag cards and daily capture sheets to be completed & returned to the Tournament Director, along with photographic evidence of entire fish, at the One Mile by 1800 hrs Saturday or points may be deducted. Allowance will be made for late hook-ups

11) Protests: The Tournament Director must be advised of any protest by 1900hrs on the day of the alleged infringement. A Committee including members from other Clubs may be formed to hear any protests. Within the scope of the rules, commonsense will be used in making decisions.

12) Vessels: All vessels/anglers must return to the One Mile after fishing ceases on Saturday. Mooring facilities will either be at the pontoon or in the One Mile anchorage, arrangements to be made with GFB on arrivals.

13) Point Scoring & Trophies: If teams or individual anglers are tied on equal points, the team or anglers reaching the point score first will be deemed to be the winner. The Committee reserves the right to amend the rules & trophy list if necessary, and to refuse entry to any person or persons and no correspondence will be entered into.

14) Membership Cards: It is a condition of entry into the tournament that anglers must be able to prove current financial membership of a Club affiliated under Rule 1 above. Anglers who are unable to provide a current membership card or acceptable receipt will be liable to disqualification.

15) Reef Rumble: This reef fishing event is being held in conjunction with the gamefishing tournament. All anglers & crew participating in the gamefishing tournament are eligible to take part in this section. Rules are published separately & GFB is to be advised of any captures during the separate Reef Rumble sched.

16) Covid 19: In order to comply with QLD Government Health requirements the LSGFC may ask all persons attending any events or activities to comply with the current regulations.

PRIZE CATEGORIES

- **CHAMPION ANGLER AWARDS:** OVERALL, LIGHT TACKLE, HEAVY TACKLE MALE, FEMALE, JUNIOR & RUNNERS-UP YELLOWFIN TUNA & OTHER GAMEFISH
- **CHAMPION VESSEL AWARDS:** OVER & UNDER 8 METRES HIGHEST SCORING CRUISE CRAFT VESSEL
- **CHAMPION TEAM AWARD:** VICTRON INTERCLUB SHIELD

Numerous Daily, Novelty & Mystery Prices

Further Information is available from:

Club Secretary:

Steve Carroll - 0412 843 777

Club Captain:

Greg Barnett - 0437 724 488

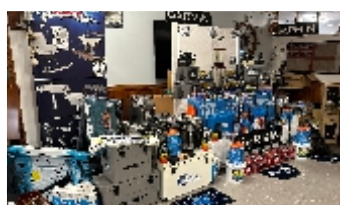
Tournament Directors:

Gordon Triplett - 0417 105 743

Wayne Thomson - 0458 258 152



Come & Experience
The Famous
RAFT UP



The Little Ship GFC wishes to thank its sponsors.
We encourage you to support them when possible.

GARMIN™



victron energy
BLUE POWER



REVOLUTION
POWER SOLUTION



FISH EAGLE
LURES



AUTOMOTIVE DETAILING SOLUTIONS
Your Fleet Management Professionals

